



**REGISTRAR
of VOTERS**



VOTER'S CHOICE ACT

[HISTORY](#)

[CHANGE](#)

[VOTE CENTERS](#)

[SURVEY](#)

[QUESTIONS](#)





CA Legislation SB 450

Passed by the State in 2016

California Voter's Choice Act authorizes specified counties, including Orange County, to conduct "Vote Center" elections

In this model, vote-by-mail ballots are sent to all registered voters and polling places are replaced by Vote Centers and vote-by-mail drop-off boxes



Orange County Board Decision

Board of Supervisors unanimously voted to move Orange County elections to the Voter's Choice Act in February 2019

Voter's Choice Act Briefing Document

- Information on comparison between polling place model and Vote Center model, including
 - Costs
 - Survey findings; and
 - More!



Voter Trends

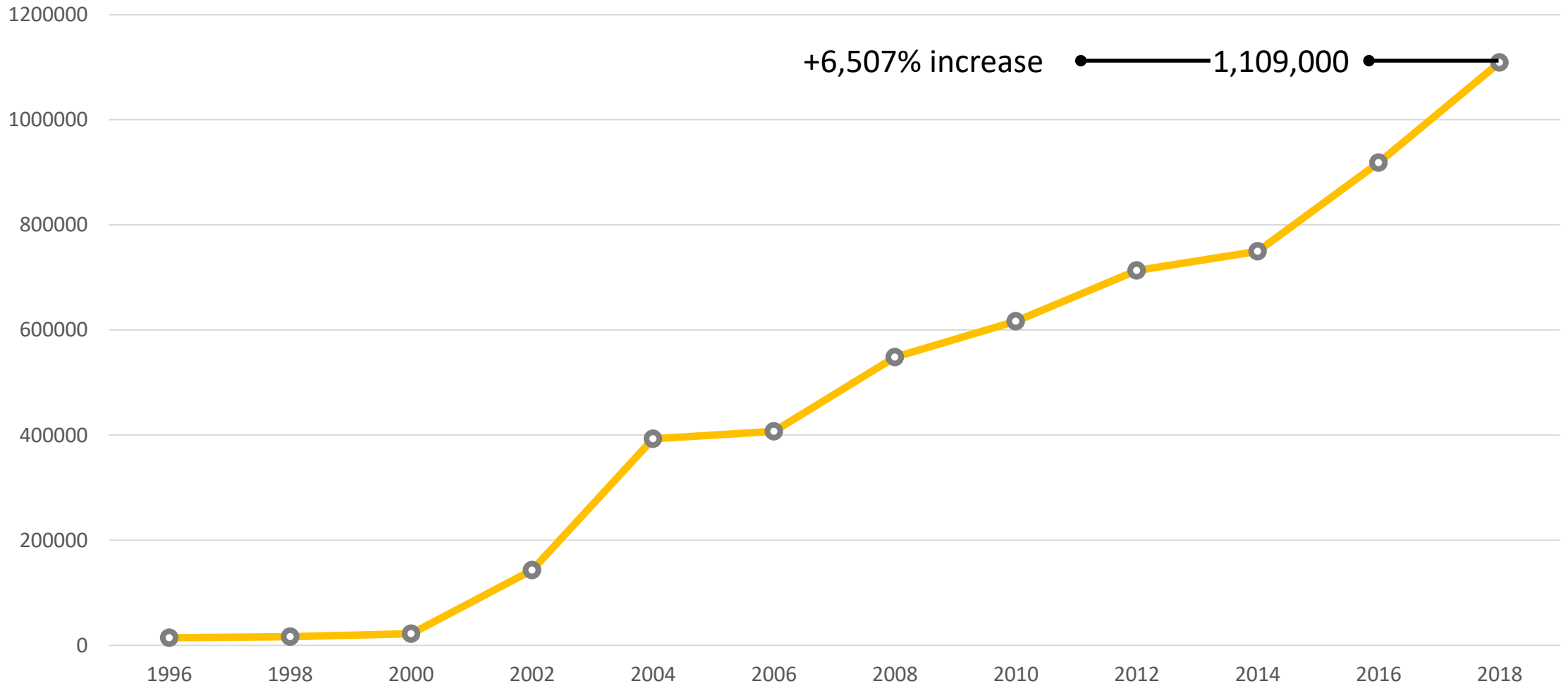
Increasing vote-by-mail voters

Decreasing in-person voters

Increasing vote-by-mail voters dropping off ballots in-person



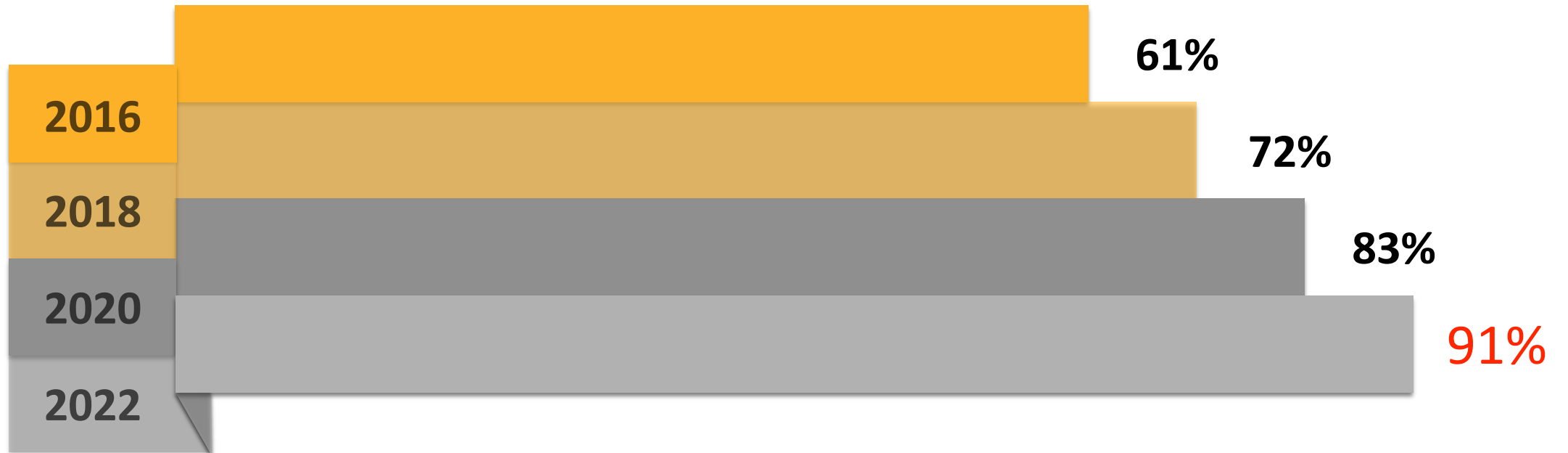
Vote-By-Mail Growth





Vote-By-Mail Growth

Year over year growth since 1996





In-Person Ballot Drop Off

Voters' changing habits mirror benefits of Vote Centers

ORANGE COUNTY REGISTRAR OF VOTERS

1300 S. Grand Ave., Bldg. C
P.O. BOX 11298
SANTA ANA, CA 92711-1298

RETURN SERVICE REQUESTED

Non-Profit Org.
U.S. Postage
PAID
Santa Ana, CA
Permit No. 77

OFFICIAL VOTE-BY-MAIL BALLOT

OFFICIAL ELECTION MAIL

Pat Q. Voter
3916 Farnam Street
Omaha, NE 68131

I hereby certify under penalty of perjury that I am a voter residing within the precinct in which I am voting and that I am the person whose name appears on this envelope. I have not applied, nor will I apply, for a vote-by-mail ballot from any other jurisdiction for this election.
Warning: You must sign the envelope in your own handwriting in order for your ballot to be counted and your signature must compare with your signature on your voter registration card. Voting twice constitutes a crime.

Voter, sign here. Power of attorney NOT ACCEPTABLE.

Date of signing

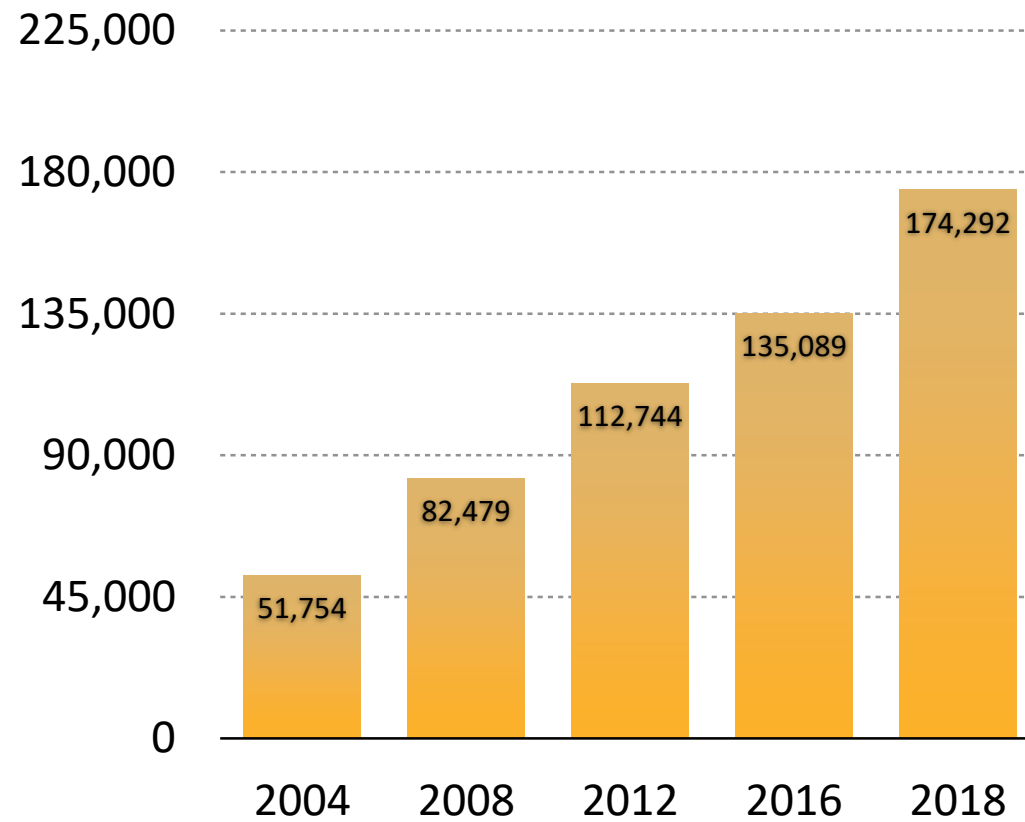
Voter, print your information here.

Name PRINT HERE

Address PRINT HERE

City, State, ZIP PRINT HERE

This envelope must be signed, dated and postmarked on or before Election Day. Your vote-by-mail ballot must be received no later than three days after Election Day.





Voter's Choice Act



VOTE-BY-MAIL



IN-PERSON
VOTING



OPEN
11 DAYS

Every voter in Orange County would receive a vote-by-mail ballot and would have the opportunity to mail it, drop it off at permanent ballot drop-box, or vote in person at any one of 188 vote centers throughout Orange County.

Voting Improvements





How is Voting Changing?



All registered voters will receive a vote-by-mail ballot



Choices mailing ballot, dropping ballot off, voting in-person at Vote Centers and Ballot Drop Offs throughout Orange County



Hired, professional staff at Vote Centers



Vote Center Security



Electronic check-in with real-time updates



Controlled chain of custody



Enhanced security measures for vote-by-mail



What Are Vote Centers?

In-person voting at Vote Centers, no more polling places

A voter can vote at any Vote Center

Multiple days and hours:

38 locations open for 11 days (including Election Day)

188 locations open for 4 days (including Election Day)



Vote Center Services

Services at Vote Centers include:

- ✓ Register, update address or change your party
- ✓ Vote in-person or drop off your ballot
- ✓ Get a replacement ballot
- ✓ Receive language assistance
- ✓ Use accessible ballot marking device



Vote Centers

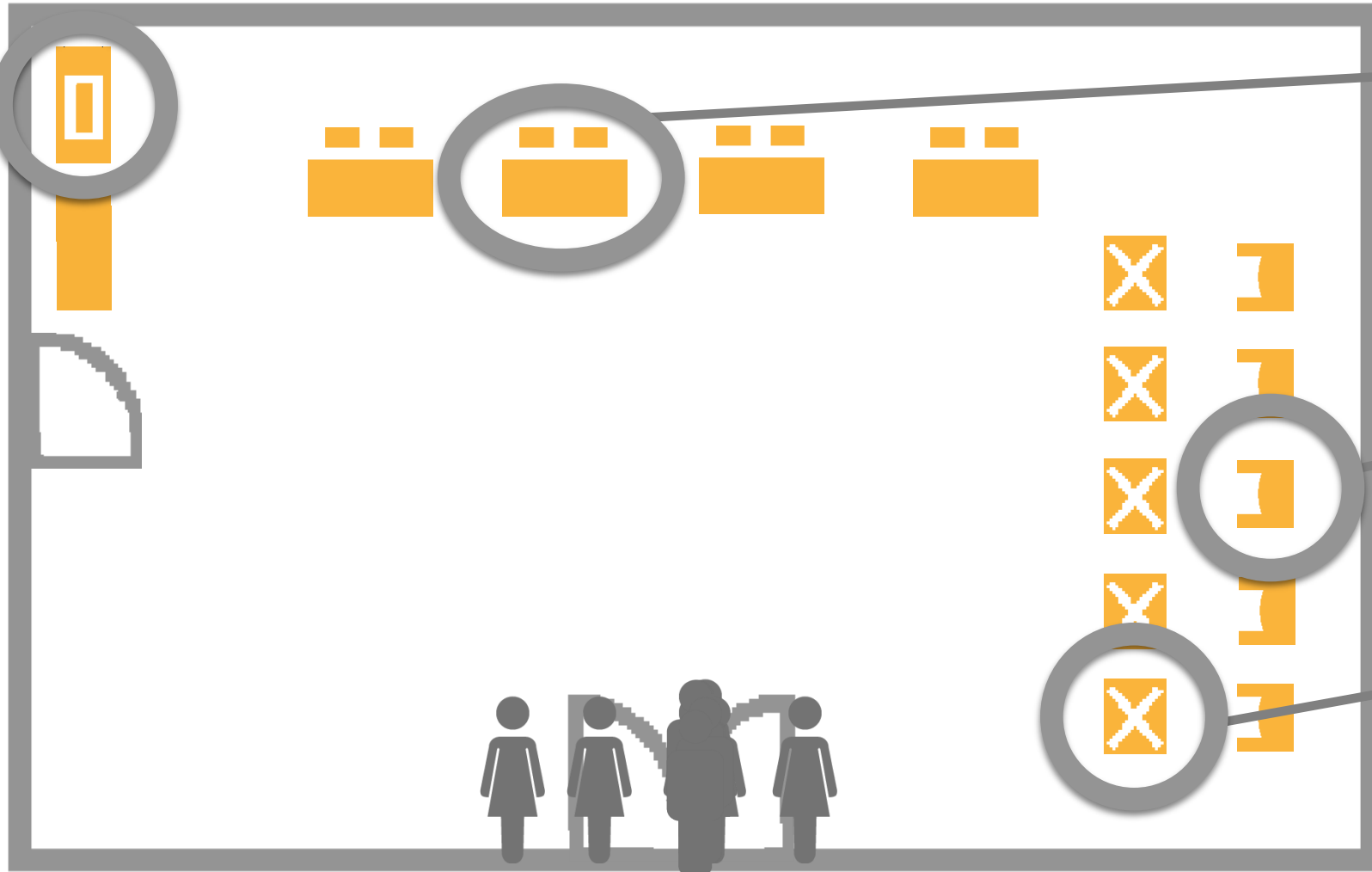
Ballot box

Drive Thru Ballot Drop off

Electronic check-in

Ballot-on-demand

Accessible voting





How do Vote Centers Compare?

FEATURES	POLLING PLACE	VOTE CENTER
Electronic voting units	✓	✓
Drop off ballot at any site	✓	✓
Accessible voting	✓	✓
Ballot on-demand	✗	✓
Secure electronic check-in	✗	✓
Provisional ballots eliminated	✗	✓
Trained employees	✗	✓
Vote at any location	✗	✓
Multiple days to vote	✗	✓
Reduced costs	✗	✓



What Are Ballot Drop Boxes?

110 Ballot Drop Boxes located throughout Orange County

Secure, Accessible and Locked

Conveniently located

Open for 30 days (including Election Day), 24/7



Ballot Drop Box

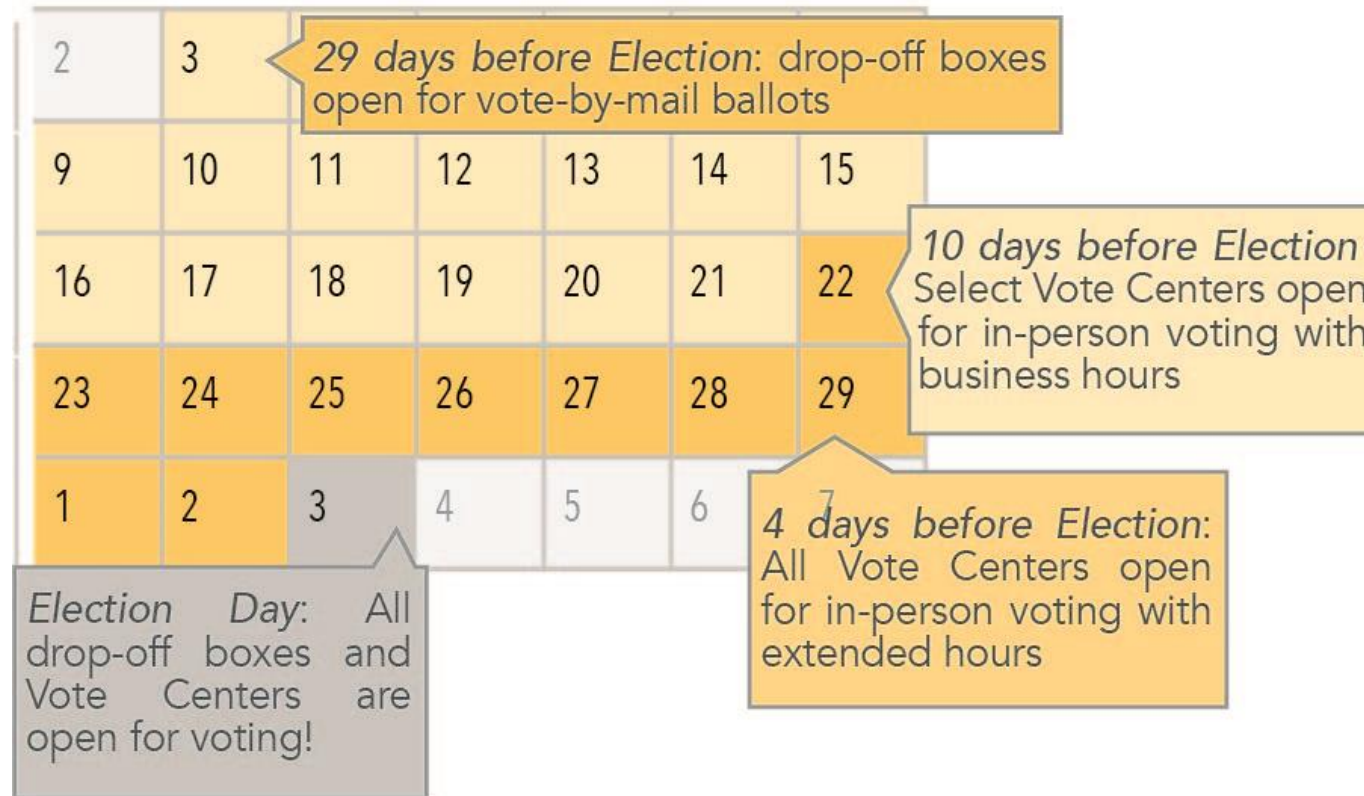


**MILITARY
GRADE
DROP BOX**



Vote Center Voting Calendar

30 Days of Voting





Vote Center Selection

What do we consider in picking Vote Center locations?

Public transportation

Population centers

Language communities

Low income communities

Low rates of household vehicle ownership

Traffic patterns

Vote-by-mail usage



Vote Center Selection

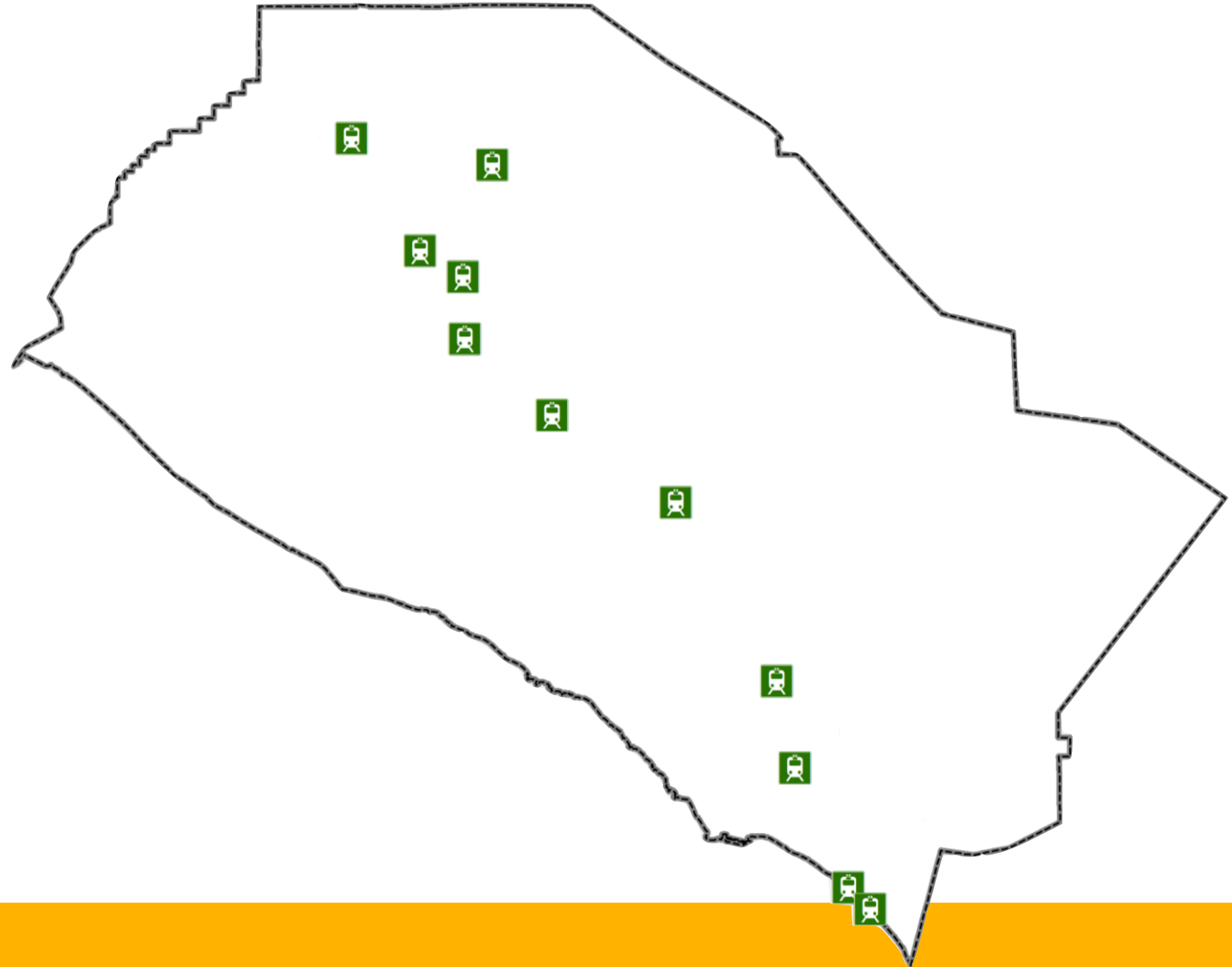
The Registrar of Voters uses voter and population data to choose community based locations for Vote Centers throughout the county





Vote Center Selection

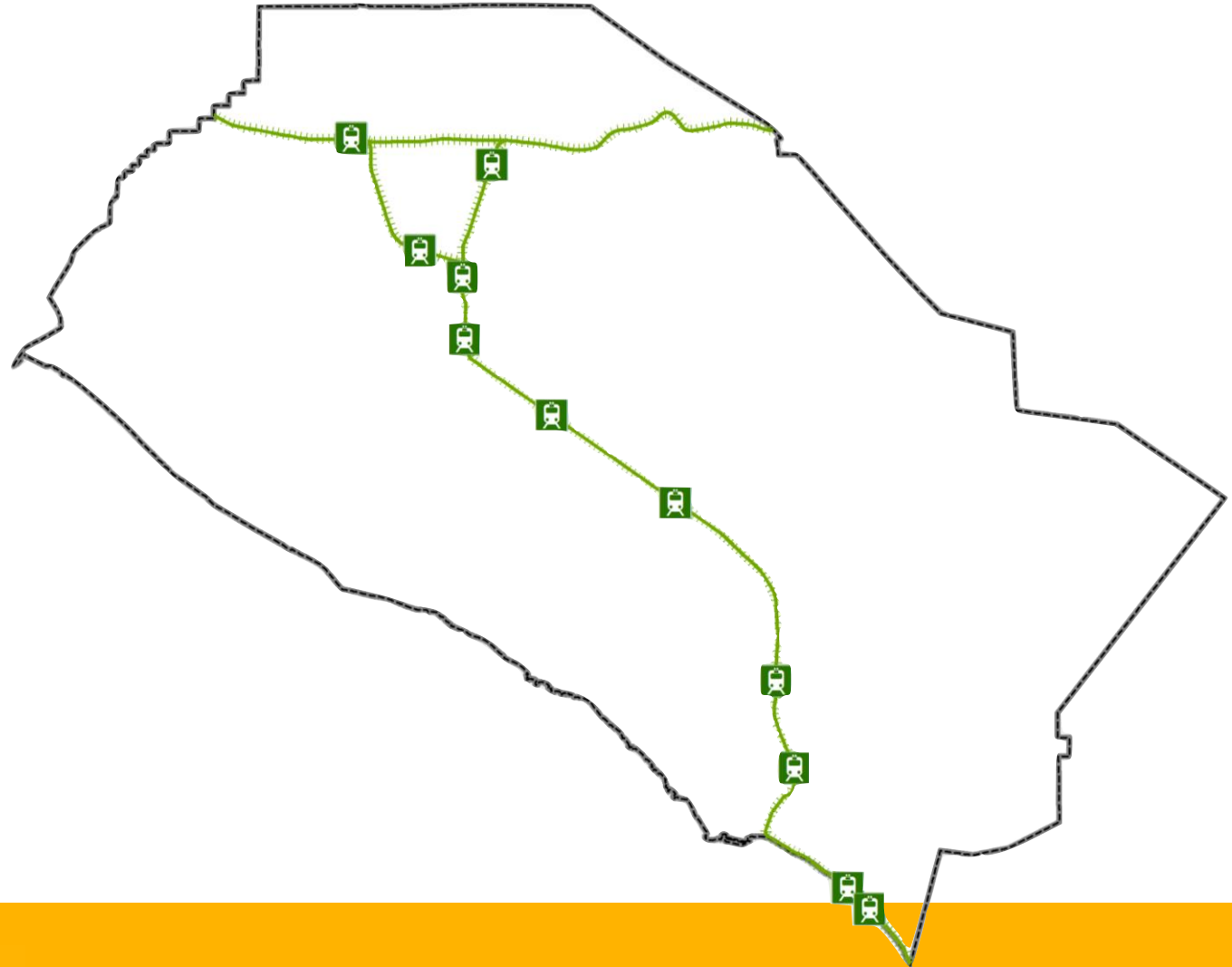
Public transportation





Vote Center Selection

Public transportation

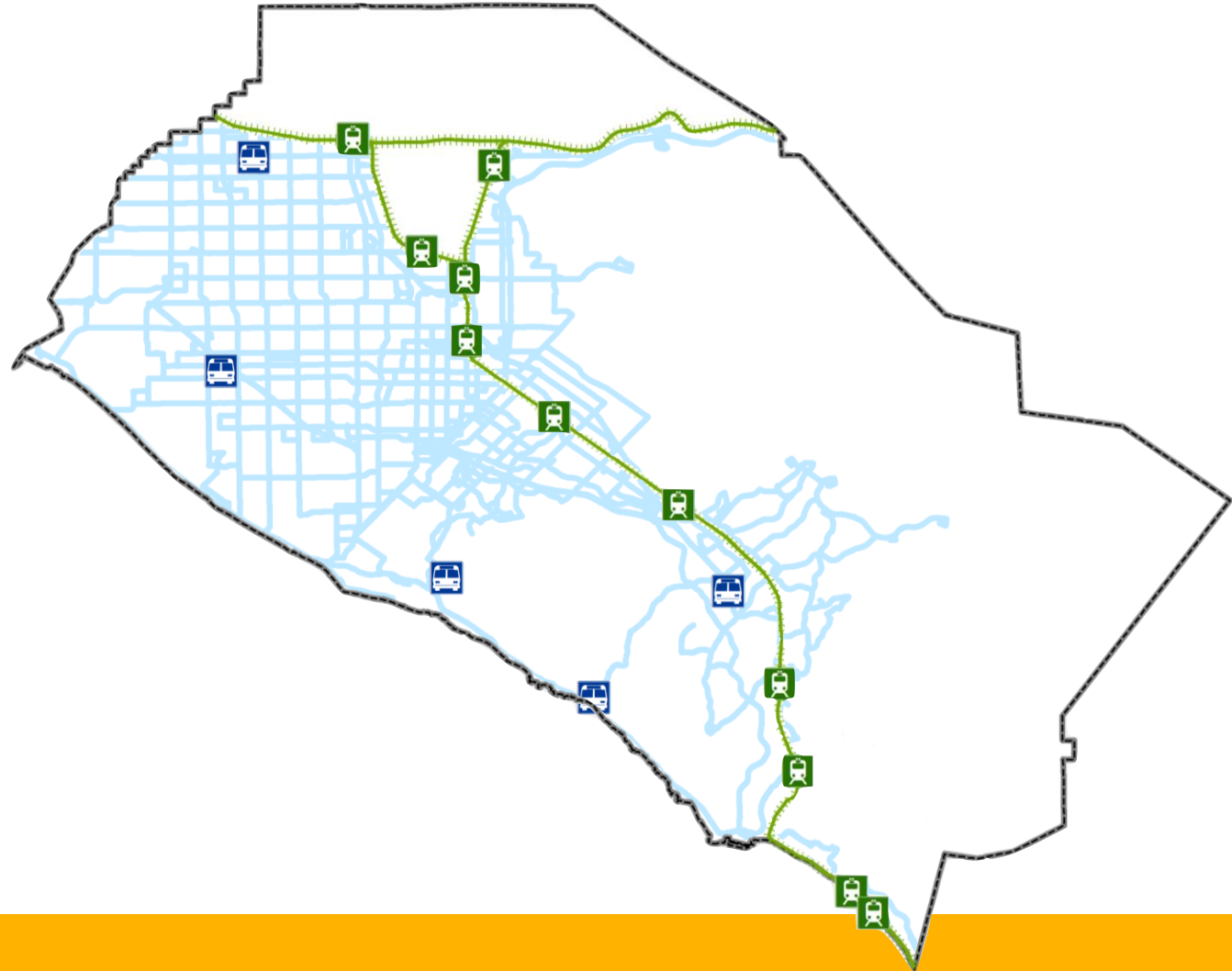




Vote Center Selection

Public transportation

Population centers



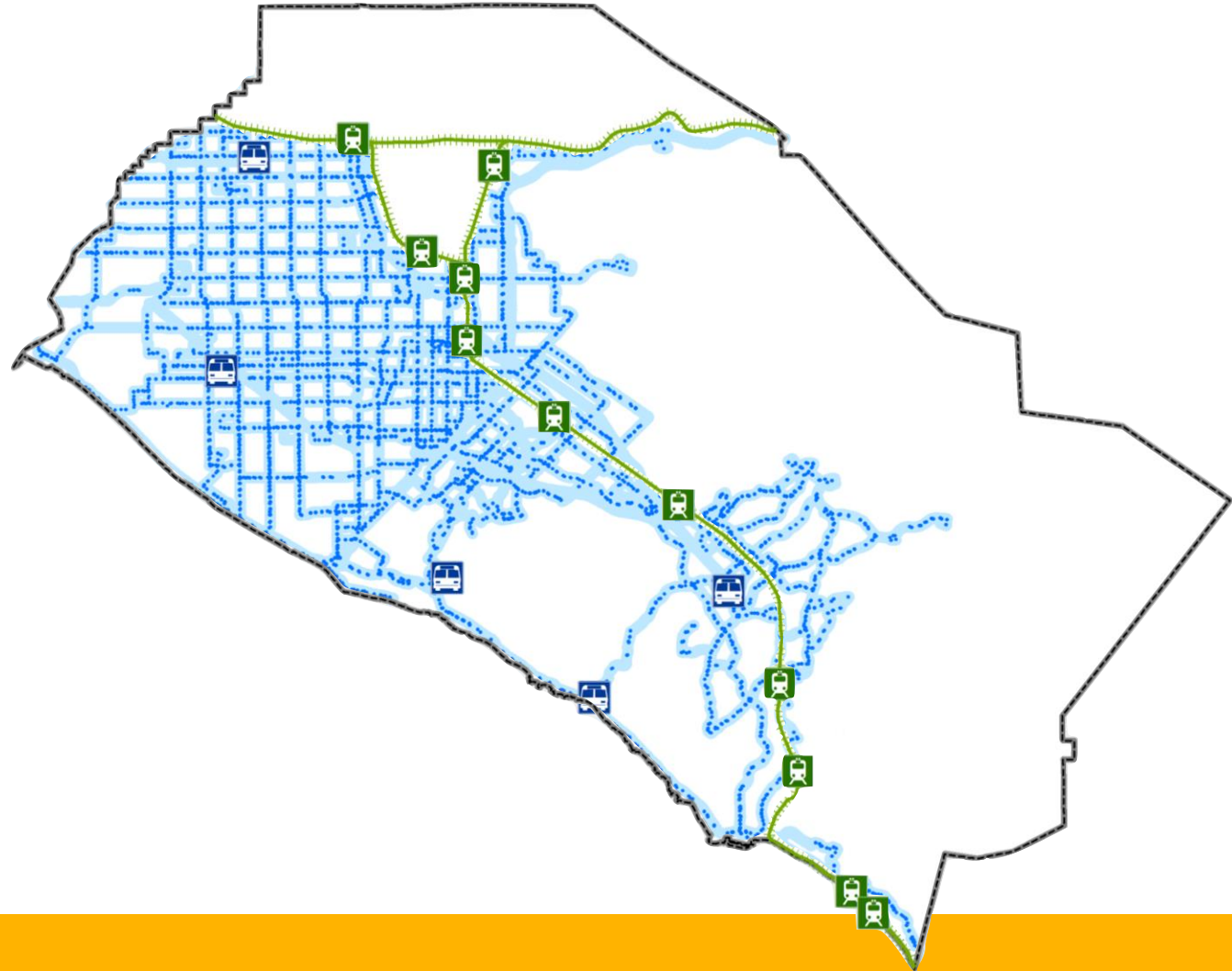


Vote Center Selection

Public transportation

Population centers

Language communities





Vote Center Selection

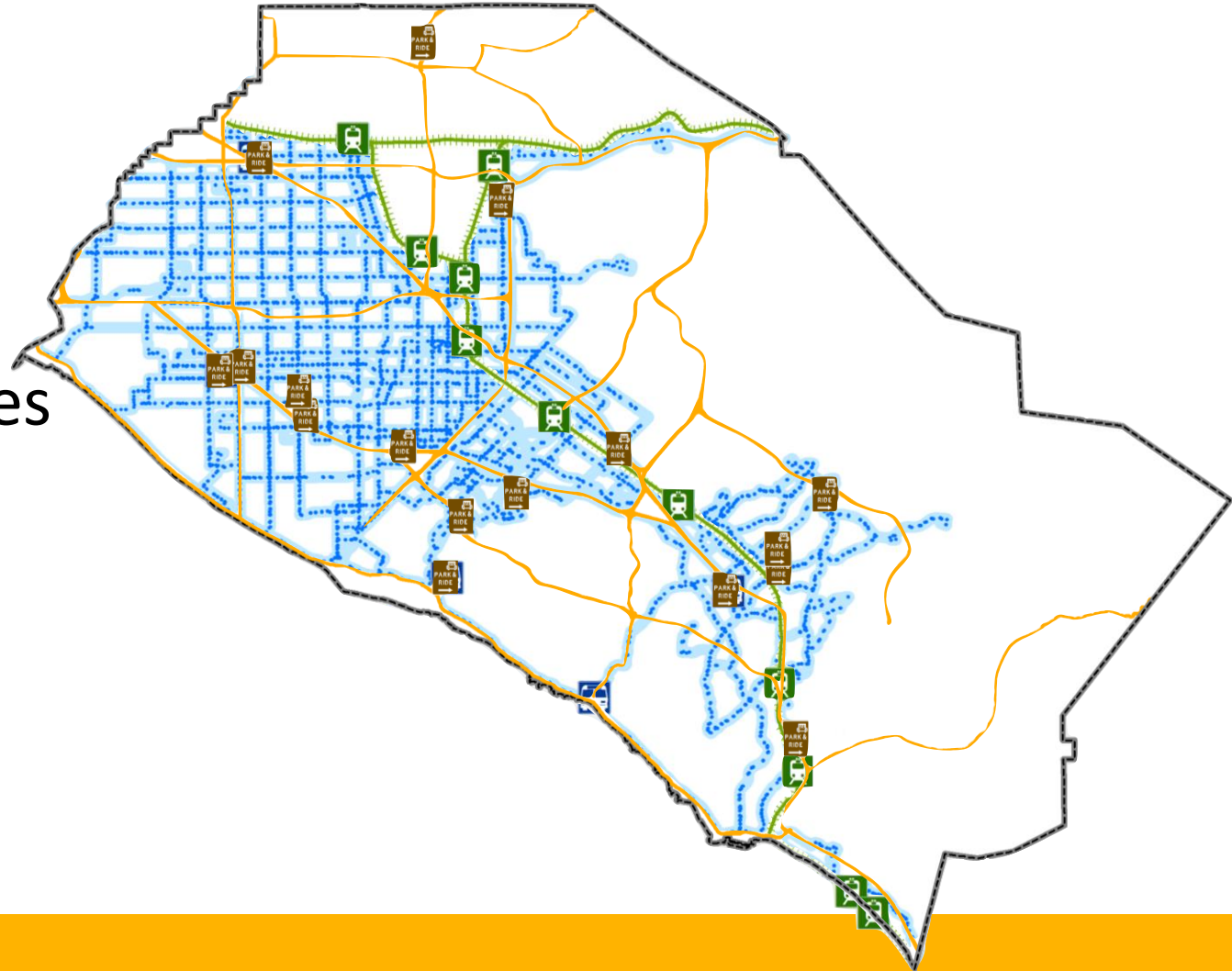
Public transportation

Population centers

Language communities

Low income communities

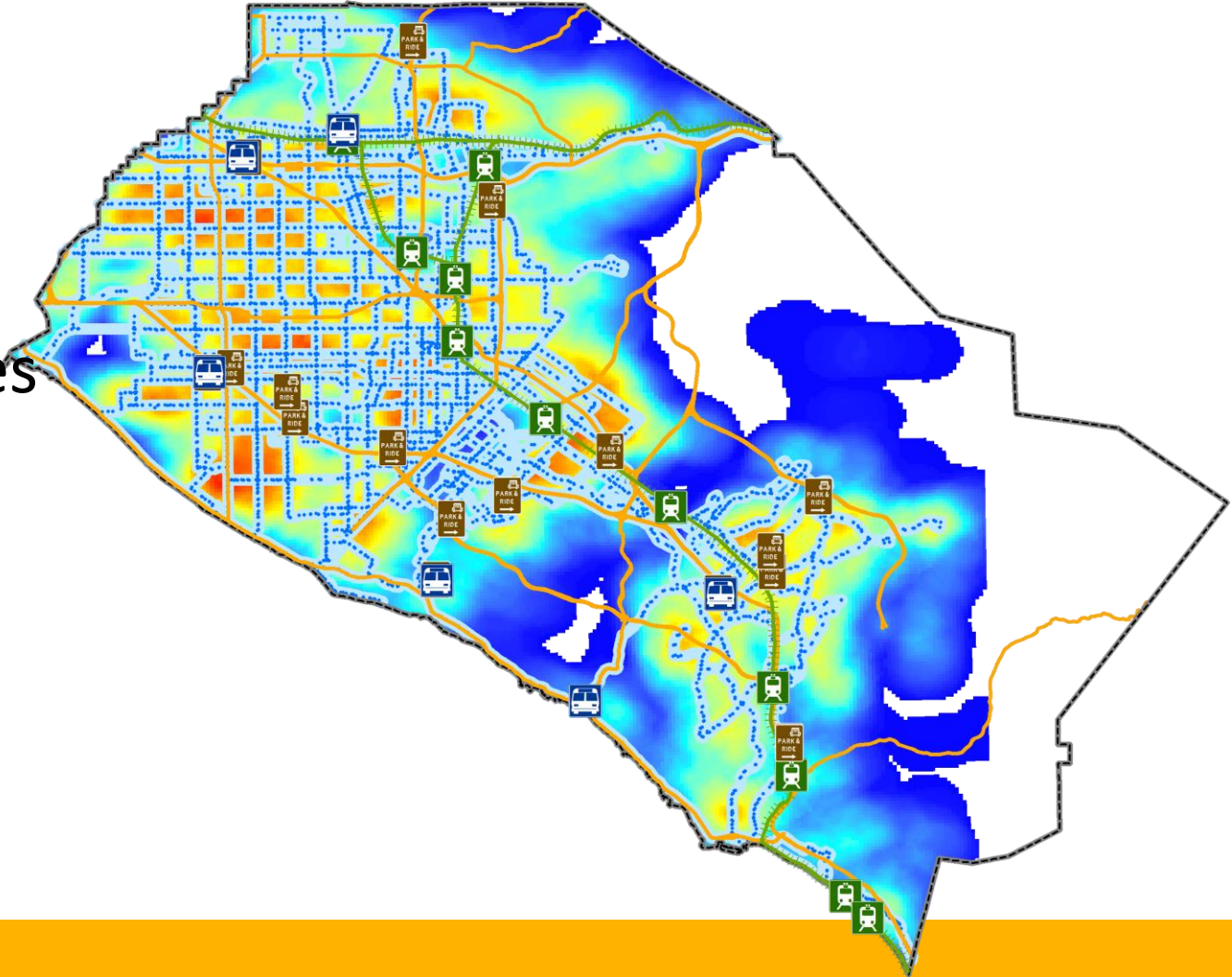
Low rates of household
vehicle ownership





Vote Center Selection

- Public transportation
- Population centers
- Language communities
- Low income communities
- Low rates of household vehicle ownership
- Traffic patterns
- Vote-by-mail usage





Vote Center Selection

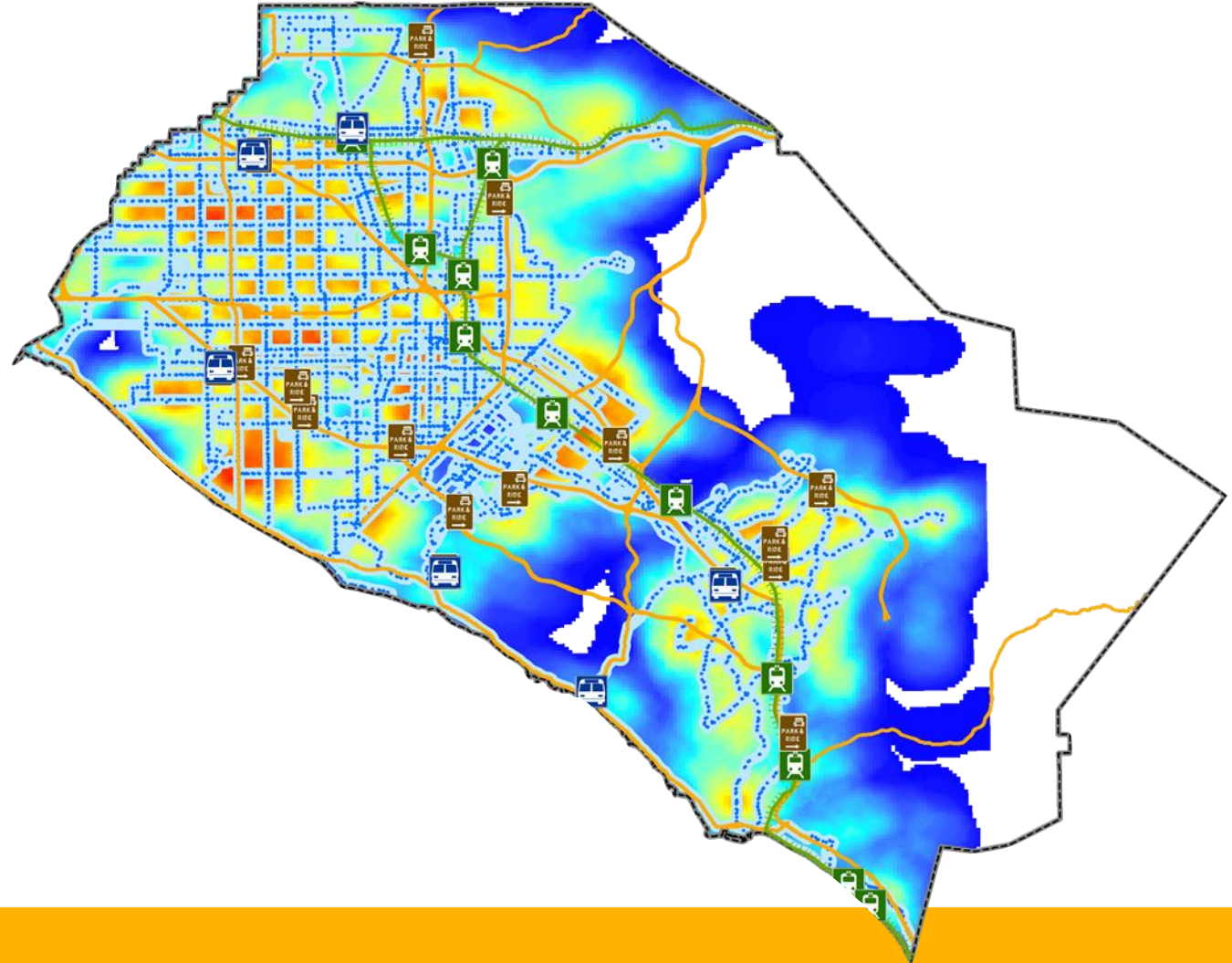
With everything considered:

Requirements by law

Location availability

Public feedback

The Registrar of Voters will select Vote Center locations.

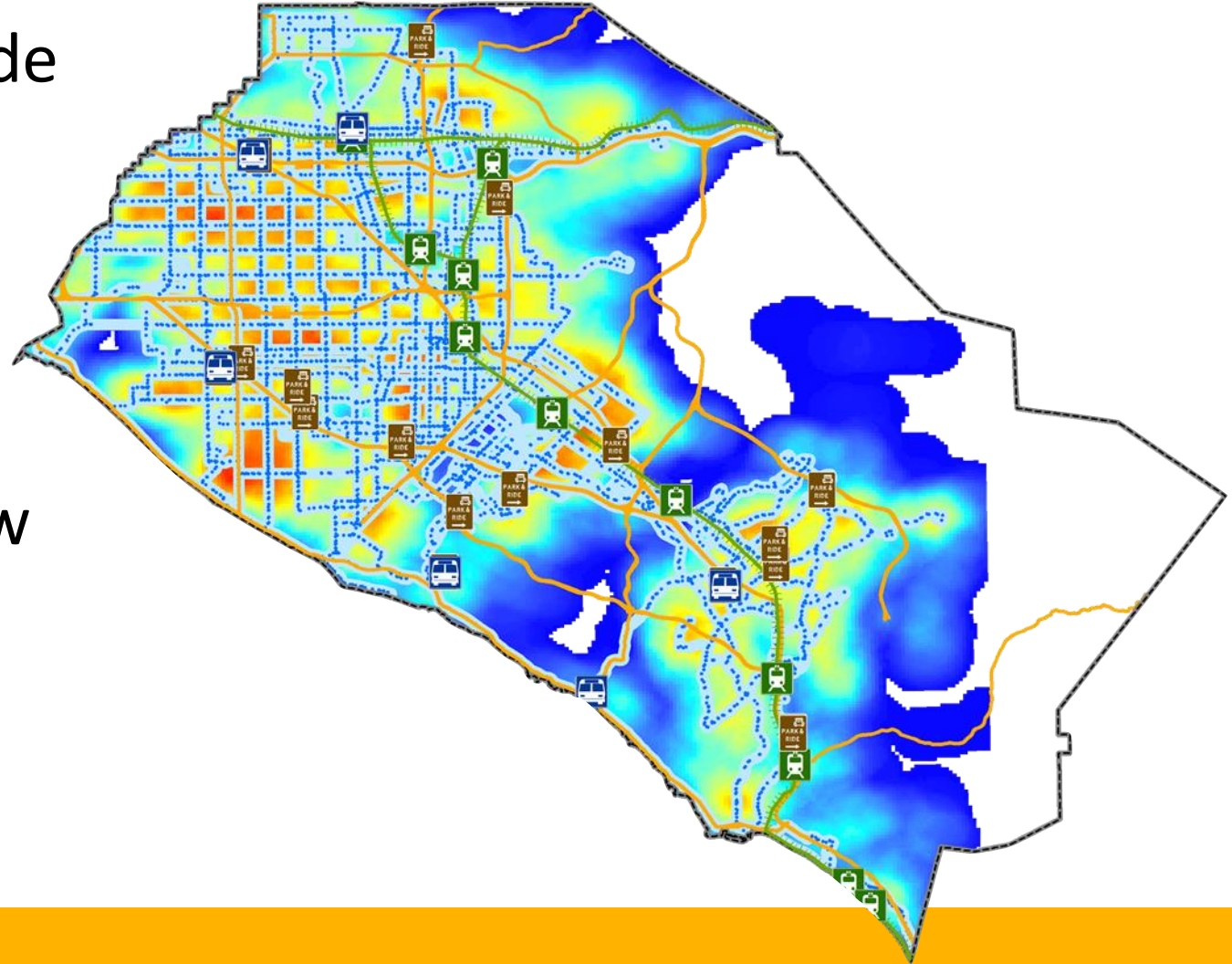




Vote Center Selection Public Input

Voters are able to provide suggestions for Vote Centers through the website.

We can go through a few suggestions now.





Community Involvement

Community Election Working Group (CEW)

Quarterly meetings of diverse 25-member community advisory board

CEW LAAC & VAAC Subcommittees

Quarterly meetings of subject matter experts in voting language and disability access

**PUBLIC
INPUT**

Community Workshops & Public Hearing

26 workshops seeking public input on site selection focused on data-driven criteria

Roadshow to Vote Centers 2020

Traveling monthly update meetings



Community Support

Strong community support among a variety of organizations



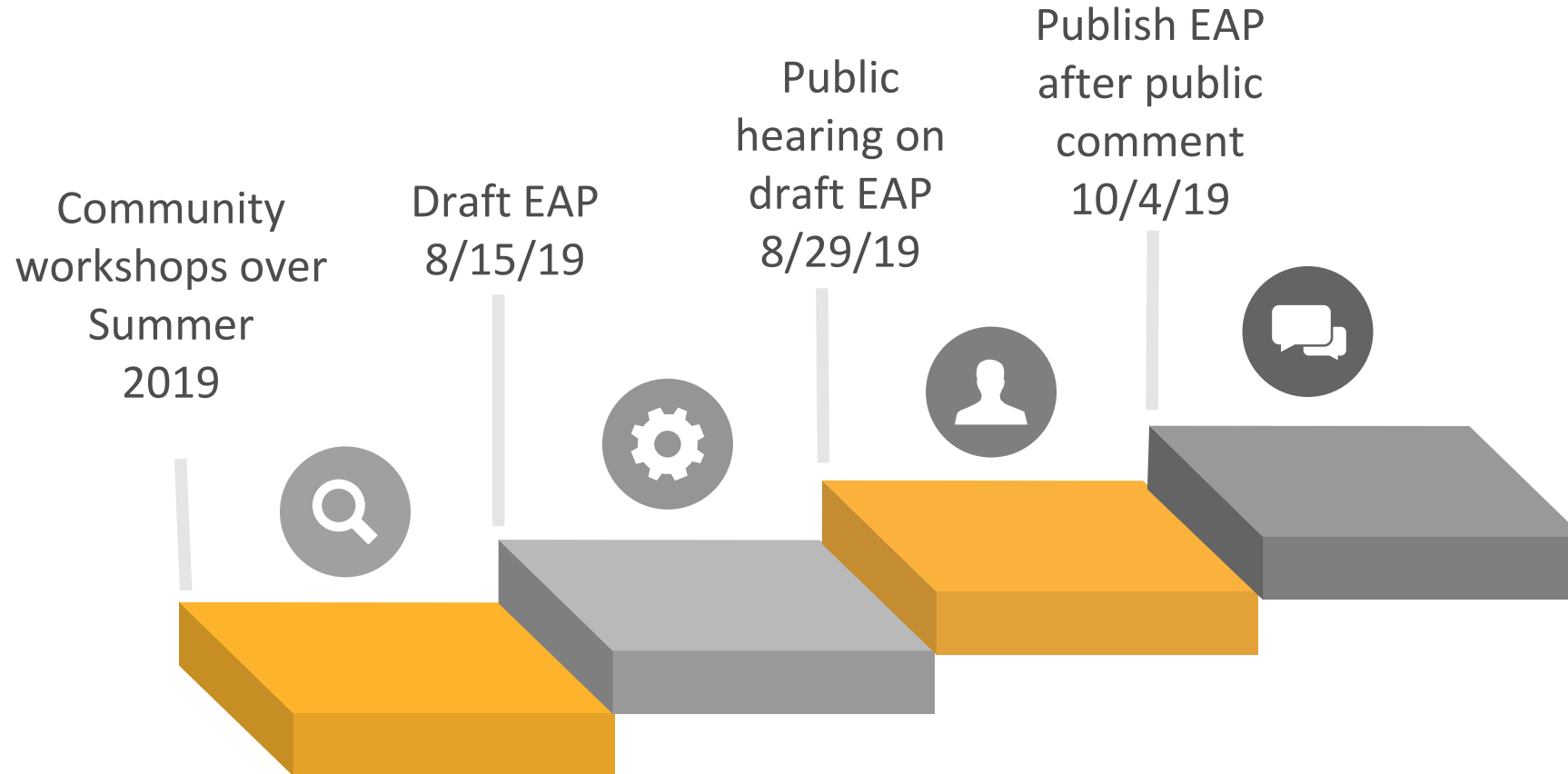
OC Political Parties and Organizations





Vote Center Plan Timeline

The Election Administration Plan (EAP)





2019 Vote Center Timeline

Through the end of 2019





Additional Workshops

26 workshops scheduled to take place in June and July 2019

A full list is available:

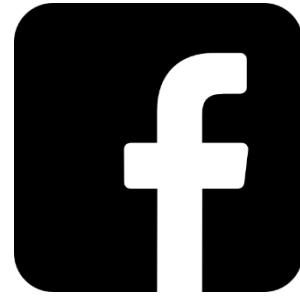
- Printed flyers at information table
- Online at ocvote.com/votecenter



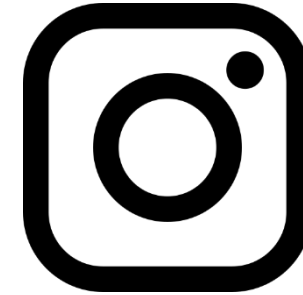
Follow Us on Social Media



Twitter
[@OCRegistrar](#)



Facebook
[/OCROV](#)



Instagram
[/OCRegistrar](#)



More Information Available Online

ocvote.com/votecenter





Vote Center Survey



VOTE CENTER FEEDBACK SURVEY

1. Zip code of residence: _____
2. Age range: 22 and under 23 – 38 39 – 54 55 – 73 74+

3. Do you prefer assistance in any other language(s) at a Vote Center?

- No, please move onto the Question 4
- Yes, please continue answering below:

3a. Please check any other language(s) you would like to receive assistance at a Vote Center:

- Spanish Vietnamese Chinese Korean
 Tagalog Farsi (Persian) Other: _____

3b. If you are unable to receive in-person language assistance at a Vote Center, please check all other language assistance services(s) you would prefer to use:

- Having translated written materials
 Speaking with someone who speaks my language over a phone call
 Video-conferencing with someone in my language (similar to FaceTime)
 Only receiving in-person language assistance

4. Please rate how much you agree or disagree with the following statements:

	Strongly Agree	Agree	Neither Agree or Disagree	Disagree	Strongly Disagree
I am willing to travel to a Vote Center that is less than 3 miles away.	<input type="radio"/>	<input type="radio"/>	<input type="radio"/>	<input type="radio"/>	<input type="radio"/>
I am willing to travel to a Vote Center that is 3 – 6 miles away.	<input type="radio"/>	<input type="radio"/>	<input type="radio"/>	<input type="radio"/>	<input type="radio"/>
I am willing to travel to a Vote Center that is more than 6 miles away.	<input type="radio"/>	<input type="radio"/>	<input type="radio"/>	<input type="radio"/>	<input type="radio"/>

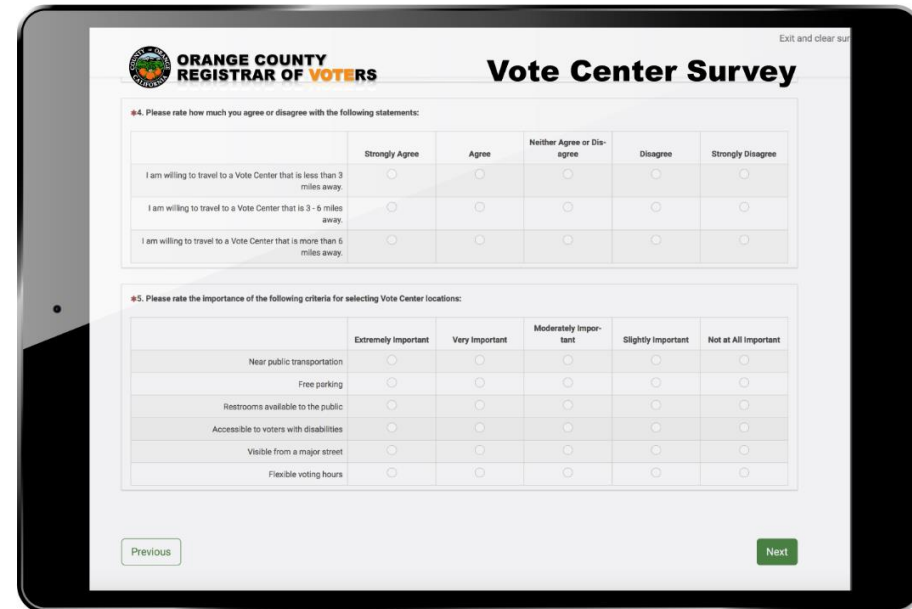
5. Please rate the importance of the following criteria for selecting Vote Center locations:

	Extremely Important	Very Important	Moderately Important	Slightly Important	Not at All Important
Near public transportation	<input type="radio"/>	<input type="radio"/>	<input type="radio"/>	<input type="radio"/>	<input type="radio"/>
Free parking	<input type="radio"/>	<input type="radio"/>	<input type="radio"/>	<input type="radio"/>	<input type="radio"/>
Restrooms available to the public	<input type="radio"/>	<input type="radio"/>	<input type="radio"/>	<input type="radio"/>	<input type="radio"/>
Accessible to voters with disabilities	<input type="radio"/>	<input type="radio"/>	<input type="radio"/>	<input type="radio"/>	<input type="radio"/>
Visible from a major street	<input type="radio"/>	<input type="radio"/>	<input type="radio"/>	<input type="radio"/>	<input type="radio"/>
Flexible voting hours	<input type="radio"/>	<input type="radio"/>	<input type="radio"/>	<input type="radio"/>	<input type="radio"/>

6. Please provide any additional feedback you may have (i.e., suggestions on Vote Center locations and services): _____

7. Please provide your email if you would like to subscribe to our Newsletter for Vote Center updates: _____

ocvote.com/VCsurvey





**THANK
YOU!**